

**Addendum**

**1160 Family Manager Set for  
MacOS**

 **adaptec®**



Adaptec, Inc.  
691 South Milpitas Boulevard  
Milpitas, CA 95035

© 1998 Adaptec, Inc.  
All rights reserved. Adaptec, and the Adaptec logo are  
trademarks of Adaptec, Inc. which may be registered in  
some jurisdictions.

Printed in Singapore  
STOCK NO.: 511984-00, Rev. A KL 4/98

▼▼▼▼ **1160 Family Manager Set  
for MacOS**

**Addendum**

 **adaptec®**

**Copyright**

© 1998 Adaptec, Inc. All rights reserved. No part of this publication may be reproduced, stored in a retrieval system, or transmitted in any form or by any means, electronic, mechanical, photocopying, recording or otherwise, without the prior written consent of Adaptec, Inc., 691 South Milpitas Blvd., Milpitas, CA 95035.

**Trademarks**

Adaptec, the Adaptec logo, and AHA are trademarks of Adaptec, Inc. which may be registered in some jurisdictions.

All other trademarks are owned by their respective owners.

**Changes**

The material in this document is for information only and is subject to change without notice. While reasonable efforts have been made in the preparation of this document to assure its accuracy, Adaptec, Inc. assumes no liability resulting from errors or omissions in this document, or from the use of the information contained herein.

Adaptec reserves the right to make changes in the product design without reservation and without notification to its users.

This Addendum explains how to install the Adaptec 1160 Family manager Set driver for MacOS computers. This driver supports the AHA<sup>®</sup>-F940 PCI host adapter.

The requirements for using the AHA-F940 with MacOS computers are as follows:

- PCI-based PowerPC computer
- MacOS 7.6.1 or greater (MacOS 8 recommended)

## Installing the Driver for the First Time

Your AHA-F940 host adapter is *not* MacOS ready out of the box. The MacOS driver must be flashed into the ROMs of the AHA-F940 before the AHA-F940 will work on MacOS computers. Follow these steps to install the MacOS driver:

- 1 Shut OFF the power to the MacOS computer and disconnect the power cord.
- 2 Remove the cover of the computer case, following the directions in the manufacturer's documentation.
- 3 Install the AHA-F940 host adapter in an empty PCI slot in the MacOS computer. Refer to the *AHA-F940/950 Installation Guide*. We suggest that you also refer to the PCI card installation instructions in the documentation for your MacOS computer.

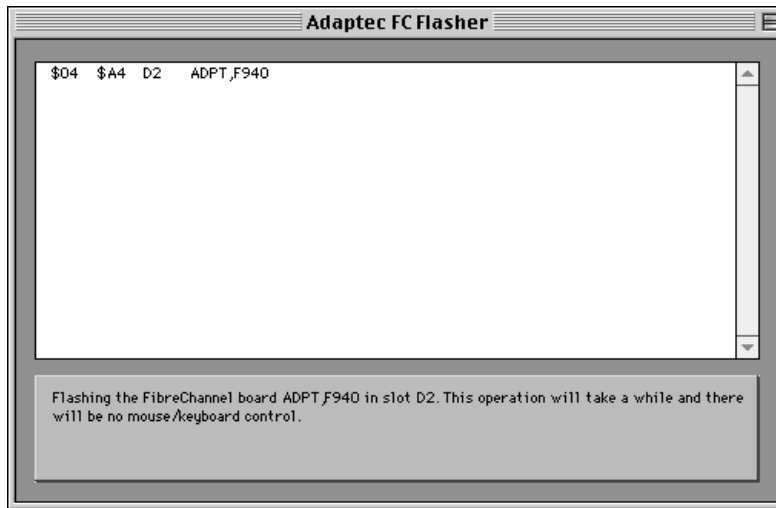
You may need to install the AHA-F940 in a certain way in order for it to work with other PCI cards and devices in your computer. To determine this, read the documentation for the other PCI cards and devices that are installed (or that you plan to install).

1160 Family Manager Set Addendum for MacOS

- 4 Replace the computer cover, reconnect the power, and start up the computer. You will notice that the green light on the rear of the AHA-F940 is unlit.
- 5 Remove the *AHA-F940 MacOS Installer* diskette from the *MacOS Open Me First* packet and insert it into the floppy disk drive of your MacOS computer.
- 6 Read the *Read Me First* file on the *AHA-F940 MacOS Installer* diskette. This file contains the latest information on using the AHA-F940 in MacOS computers. This includes information on using the AHA-F940 with other PCI cards and Fibre Channel devices and with other application software.

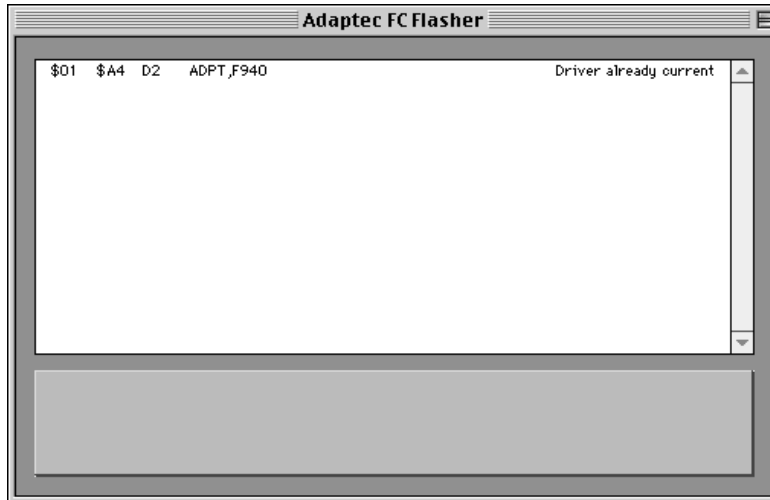


- 7 Double-click the **Adaptec FCFlasher** icon.
  - a If the AHA-F940 has *not* been “flashed” with the MacOS driver, the window shown below will appear. Your cursor will be frozen. This is normal; your MacOS computer is still running. *Do not* interrupt this process.



Wait while the program locates and updates your AHA-F940 host adapter(s) with the MacOS firmware. Then continue with step 8.

- b** If you purchased your Adaptec AHA-F940 through a Value Added Reseller or a Storage Integrator, the AHA-F940 may have already been “flashed” with the MacOS driver. In this case, the window shown below will appear when you run the AHA-F940 Flasher.



In this case, skip to step 10 and configure your attached Fibre Channel storage.

- 8** Quit the application. You will see the window shown below.



If you have not yet connected cables to the AHA-F940, we recommend that you shut down the computer and connect the cables now before you restart the computer.

**1160 Family Manager Set Addendum for MacOS**

**9** Restart your MacOS computer.

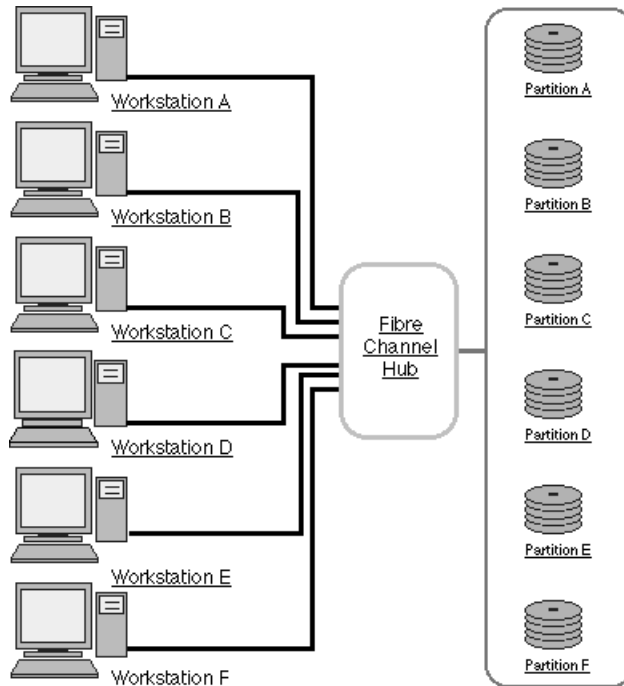
The MacOS firmware should now be loaded into the ROM of the AHA-F940. When the computer boots, if you have correctly cabled the Fibre Channel loop, the light on the rear of the AHA-F940 will glow green when the driver is loaded.

**10** Your AHA-F940 is now ready for use. You may use any MacOS SCSI Manager 4.3 compliant drive utility to configure attached Fibre Channel storage devices. Refer to the *AHA-F940 Read Me First!* file for a list of tested and approved utilities.



## Important Note about Multi-Initiator Use

The Adaptec AHA-F940 can be used in a *multi-initiator* environment. This means that you can set up multiple MacOS computers equipped with AHA-F940 host adapters to have shared access to common storage. The diagram below illustrates this configuration.



In this setup, all workstations have write and read access to all partitions. (Write access includes opening and closing windows, moving windows, and saving files on the partitions.) The MacOS file system does not support multiple workstation access to storage partitions unless a server is managing the shared partitions. If multiple workstations modify a partition, the volume (partition) will be corrupted and all data will be lost. Several companies offer solutions for serverless shared storage. Before attempting to assemble a serverless shared storage network, contact your reseller to determine which management software is best suited for your application.



|

—

|

—

—

|

|

—