

# ▼▼▼▼ Contents

## 1 DuraLAN Standard Driver for Windows NT 3.51

Installing the DuraLAN Standard Driver .....	1-2
Updating the DuraLAN Driver .....	1-4

## 2 Duralink Failover for Windows NT 3.51

Before You Begin .....	2-2
Tip .....	2-2
Installing the Duralink Failover Driver .....	2-3
Configuring the Ports .....	2-5
Creating the Failover Pair .....	2-6
Removing the Duralink Failover Driver .....	2-8
Monitoring Failover Pairs .....	2-9



|

|

—

—

—

—

|

|

# ▼▼▼▼ 1

## DuraLAN Standard Driver for Windows NT 3.51

### In this Chapter

- ▶ Installing the DuraLAN Standard Driver 1-2
  - ▶ Updating the DuraLAN Driver 1-4
- 
- 

This chapter describes how to install the DuraLAN Standard driver for Windows if you intend to use the DuraLAN NIC(s) independently. However, to use the NIC ports for network redundancy, install the Duralink Failover driver described in Chapter 2, *Duralink Failover for Windows NT 3.51*.

## Installing the DuraLAN Standard Driver

- 1 Start Windows NT 3.51.
- 2 In the Main window, double-click **Control Panel**.
- 3 In the Control Panel, double-click **Network**.
- 4 In the Network Settings window, click **Add Adapter**.

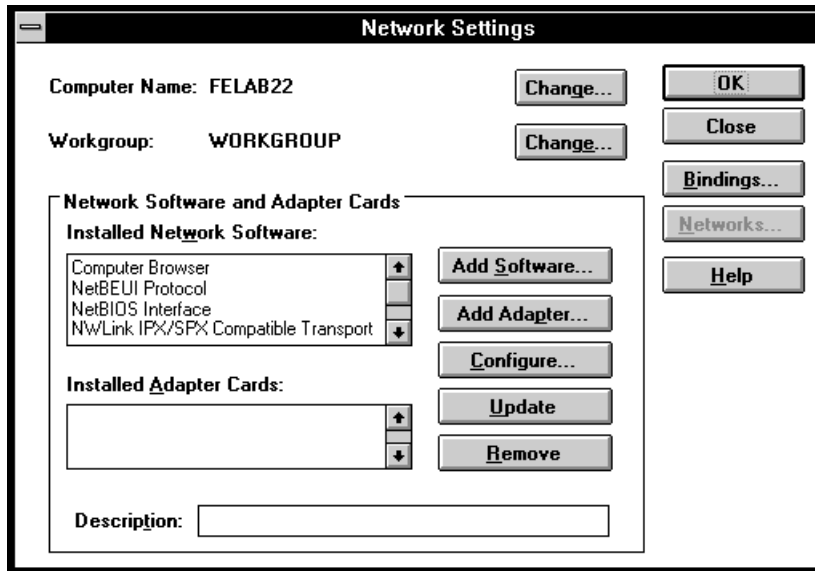


Figure 1-1. Network Settings Window

- 5 **OPTIONAL.** You may receive the following message: The service database is locked.
  - a Click **OK**.
  - b Wait for the Service Control Manager window to appear, and then click **OK**.
  - c In the Network Settings window, click **Add Adapter** again.

- 6 In the Add Network Adapter window, click **<Other> Requires disk from manufacturer** from the Network Adapter list, and then click **Continue**.

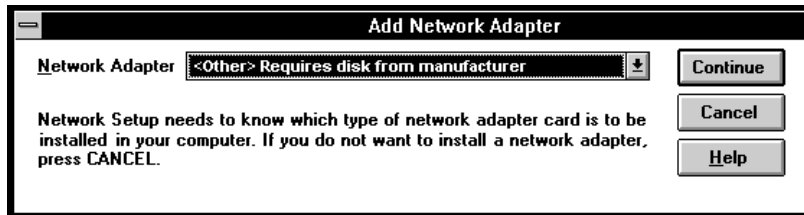


Figure 1-2. Add Network Adapter Window

- 7 Insert the LAN AND DURALINK FAILOVER DRIVERS WINDOWS DISK (disk 1 of 2) into the floppy disk drive.
- 8 In the Insert Disk window, type **a:\** and then click **OK**.
- 9 In the Select OEM Option window, click the DuraLAN NIC model or **Adaptec DuraLAN Fast Ethernet NIC**, and then click **OK**.
- 10 In the Adaptec DuraLAN NIC Configuration window, click the appropriate connection type for your network (or use the default, **Autodetect Default Connection**), and then click **OK**.

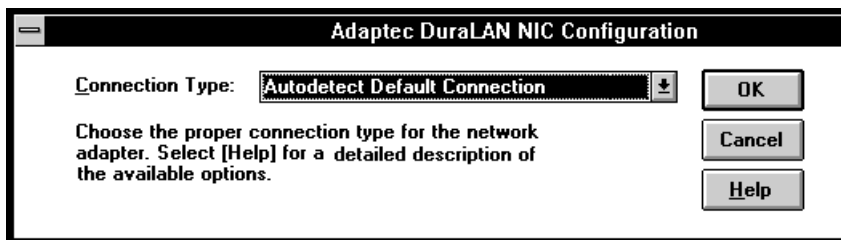


Figure 1-3. Adaptec DuraLAN NIC Configuration Window

- 11 Repeat step 10 for each additional port.
- 12 In the Network Settings window, the ports appear. At this point, you may either click **OK**, or click **Bindings** to select the protocols you want to bind.

- 13 Consult your Microsoft® Windows NT 3.51 documentation for help configuring the protocol (for example, entering TCP/IP values).
- 14 When you're done, remove the floppy disk from the floppy disk drive.
- 15 In the Network Setting Change window, click **Restart Now**.



---

**Note:** If you were required to insert the Windows NT CD, you must re-install the latest Microsoft Windows NT Service Pack, and then restart the system again.

---

## Updating the DuraLAN Driver

- 1 Start Windows NT 3.51.
- 2 In the Main window, double-click **Control Panel**.
- 3 In the Control Panel, double-click **Network**.
- 4 In the Network Settings window, click **Adaptec DuraLAN NIC** from the Installed Adapter cards list, and then click **Remove**.
- 5 **OPTIONAL.** If SNMP is not set up on the server, the Service Control Manager will appear which you may ignore in this installation. Click **OK**.
- 6 Repeat Step 4 for each additional port.
- 7 When you're done, click **OK** in the Network Settings window.
- 8 In the Network Setting Change window, click **Restart Now**.



# 2

## Duralink Failover for Windows NT 3.51

### In this Chapter

- |   |     |
|---|-----|
| ➤ Before You Begin                        | 2-2 |
| ➤ Installing the Duralink Failover Driver | 2-3 |
| Configuring the Ports                     | 2-5 |
| Creating the Failover Pair                | 2-6 |
| ➤ Removing the Duralink Failover Driver   | 2-8 |
| ➤ Monitoring Failover Pairs               | 2-9 |
- 
- 

This chapter provides instructions for installing Duralink Failover on a server running Windows NT 3.51.

## Before You Begin

- Verify that all system, memory, and NIC requirements are met, see *System Requirements* on page 1-5 in the DuraLAN Fast Ethernet NICs User's Guide.
- Verify that the new Adaptec DuraLAN NIC is installed properly in the server.
- If a version of the DuraLAN Standard driver or Duralink Failover driver exists, it must be replaced before you continue this installation. See *Removing the Duralink Failover Driver* on page 2-8.



---

**WARNING:** This procedure is critical because two or more DuraLAN drivers may not coexist in a system.

---

### Tip

Installation, configuration, and optional parameters for the software are updated regularly. The file path `a:\NtFailover\i386\readme.txt` contains supplemental installation instructions, as well as up-to-date software information, and should be read prior to installing Duralink Failover.



## Installing the Duralink Failover Driver

- 1 Start Windows NT 3.51.
- 2 From the Main window, double-click **Control Panel**.
- 3 In the Control Panel, double-click **Network**.
- 4 **OPTIONAL.** If SNMP is not installed you may receive the message in Figure 2-1 which you may ignore during this installation. Click **OK**.

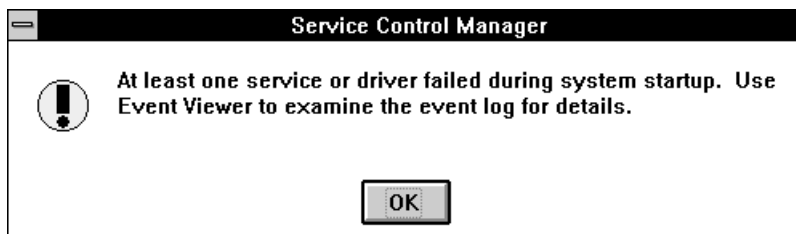


Figure 2-1. Service Control Manager Window

- 5 In the Network Settings window, click **Add Adapter**.

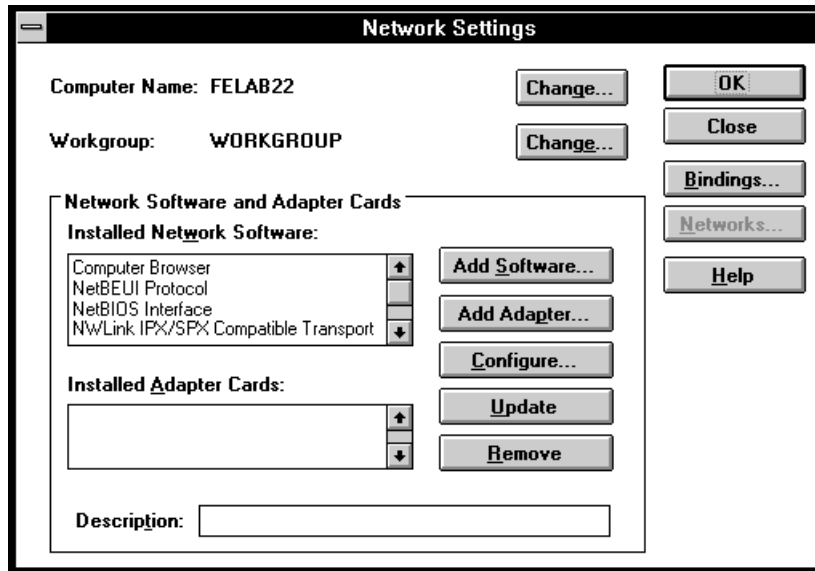


Figure 2-2. Network Settings Window

- 6 In the Add Network Adapter window, click **<Other> Requires disk from manufacturer** from the Network Adapter list, and then click **Continue**.

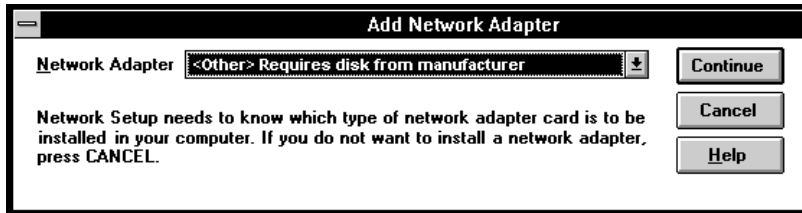


Figure 2-3. Add Network Adapter Window

- 7 In the Insert Disk window, type **a:\ntfailover\i386** and then click **OK**.
- 8 Insert the LAN AND DURALINK FAILOVER DRIVERS WINDOWS DISK (disk 1 of 2) into the floppy disk drive.
- 9 In the Select OEM Option window, click **Adaptec DuraLAN Fast Ethernet NIC** or the appropriate NIC model, and then click **OK**.

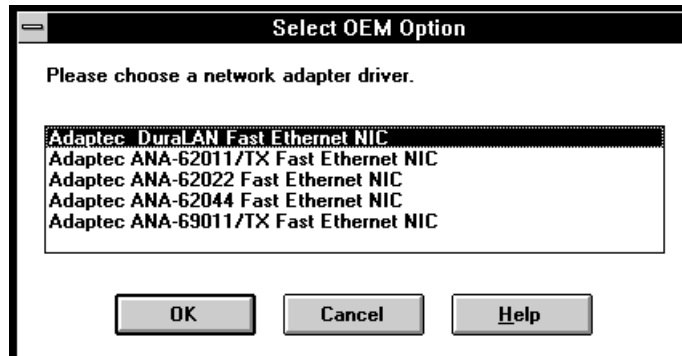


Figure 2-4. Select OEM Option Window

- 10 Continue to *Configuring the Ports*.

## Configuring the Ports

In the Adaptec New Hardware Found window, each port is assigned to the **Autodetect** default connection type. This default always detects what a port is connected to and adjusts the port to a compatible speed and transmission mode.

- 1 In the Adaptec New Hardware Found window, make sure you know which port names are assigned to the actual ports on the DuraLAN NIC.

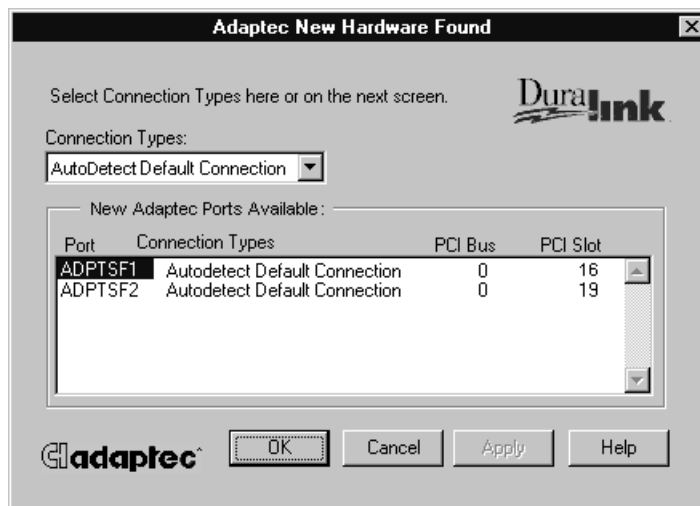


Figure 2-5. This window identifies the port's bus and PCI slot.

- 2 In the New Adaptec Ports Available box, click the appropriate port.
- 3 In the Connection Types list, click the connection type for your network or use **Autodetect Default Connection**. (For descriptions, see *Connection Types* on page A-2 in the DuraLAN Fast Ethernet NICs User's Guide.)
- 4 Click **Apply**.
- 5 Repeat steps 2-4 for each existing port.
- 6 When you're done, click **OK**.
- 7 Continue to *Creating the Failover Pair*.

## Creating the Failover Pair

You can create Failover pairs in the Configuration tab. The Failover pair consists of two ports only—the primary port and the backup port.

- 1 From the Available Adaptec Ports box, click the port to be the primary port.

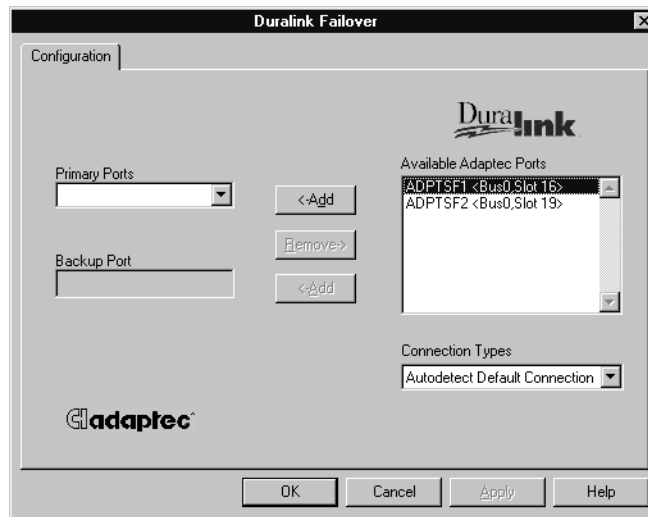


Figure 2-6. Configuration Tab

- 2 Click **Add**. The port is added to the Primary Ports list.
- 3 To create the backup port, click the appropriate port from the Available Adaptec Ports box.
- 4 Click **Add**. The port is added to the Backup Ports list.
- 5 Click **Apply**.
- 6 **OPTIONAL**. Repeat steps 1-5 to create another Failover pair.
- 7 **OPTIONAL**. To remove a Failover pair
  - a Click the port from the Primary Ports list, and then click **Remove**. Both ports return to the Available Adaptec Ports box.
  - b Click **Apply**.

- 8 When you're done, click **OK**. You'll return to the Network Settings Window.

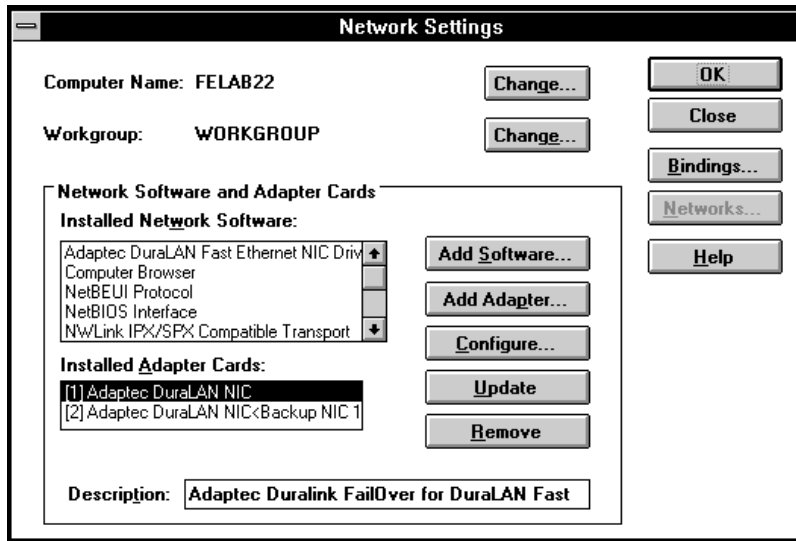


Figure 2-7. <Backup NIC1> indicates that Port 2 is the backup port for Port 1.

- 9 In the Network Settings window, click **OK**.
- 10 Consult your Microsoft Windows NT 3.51 documentation for help configuring the protocol (such as entering values for TCP/IP).
- 11 When you're done, remove the floppy disk from the floppy disk drive.
- 12 In the Network Setting Change window, click **Restart Now**.



**Note:** If you were required to insert the Windows NT CD, you must re-install the latest Microsoft Windows NT Service Pack, and then restart the system again.

## Removing the Duralink Failover Driver

- 1 In the Main window, double-click **Control Panel**.
- 2 In the Control Panel, double-click **Network**.
- 3 In the Network Settings window, click the Adaptec DuraLAN NIC from the Installed Adapter Cards box, and then click **Remove**.

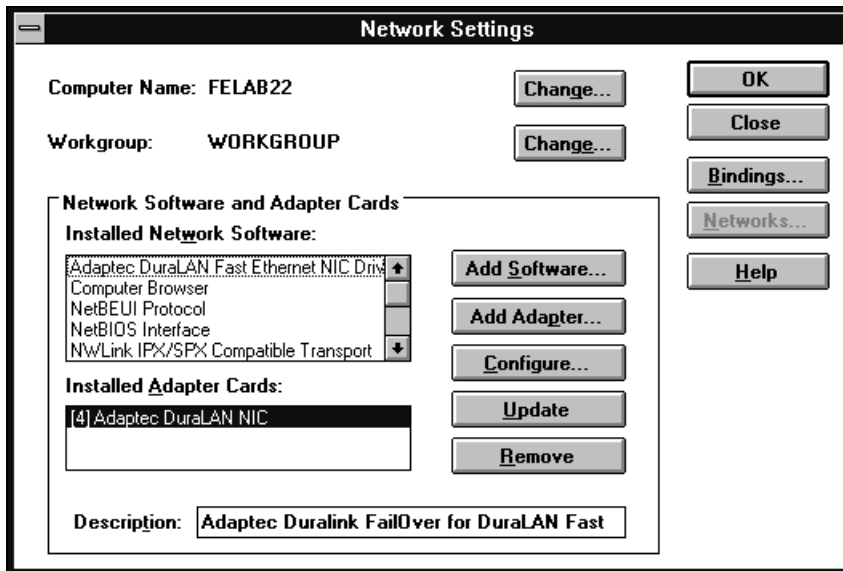


Figure 2-8. Network Settings Window

- 4 In the Network Settings message, click **Yes**.

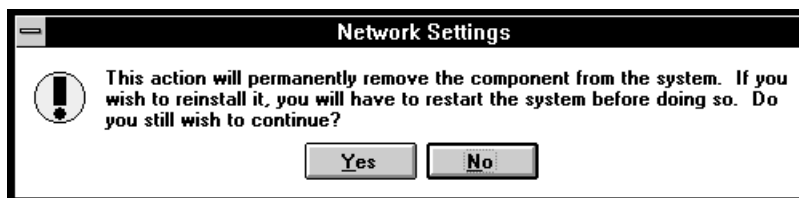


Figure 2-9. Network Settings Message Box

- 5 Repeat steps 3-4 for each additional Adaptec DuraLAN NIC.

- 6 When you're done, click **OK** to exit the Network Settings window.
- 7 In the Network Settings Change window, click **Restart Now**.

## Monitoring Failover Pairs

There are two ways to monitor the status of Failover Pairs:

- **SNMP Manager**—when failover occurs SNMP traps are sent to network management stations and error logs are updated through the operating system event log. In order to manage SNMP agents, compile the following MIB file on the SNMP management station:
  - a:\SNMPMIBS\DURALINK.MIB
- **Event Viewer Dialog Box**—the local event viewer dialog box will log failover problems.



|

—

|

—

—

|

|

—